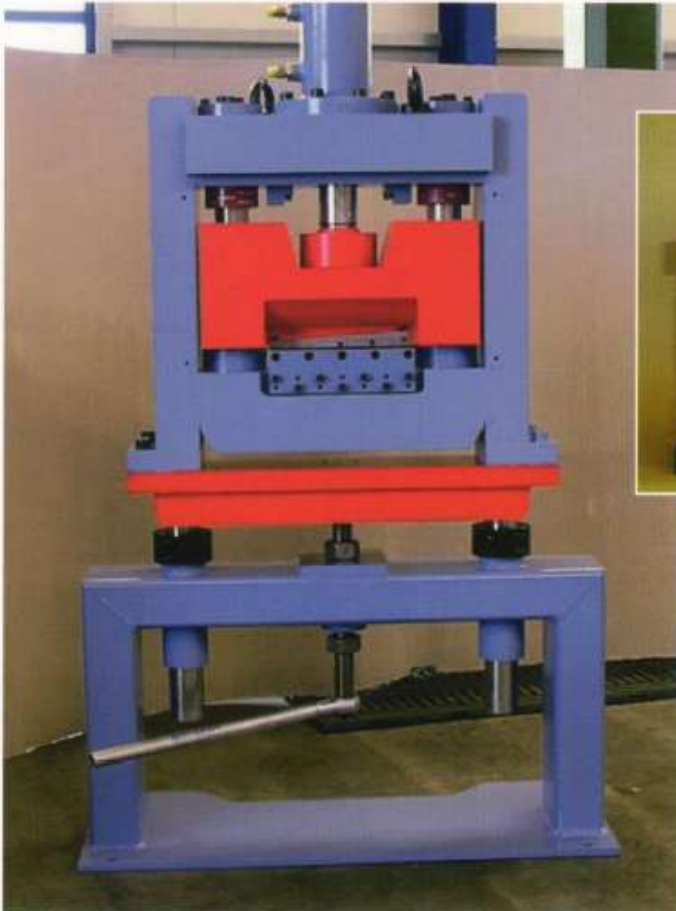


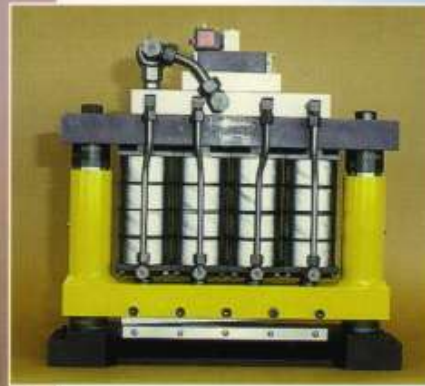
# GSW

## SHEARS

*Precision Designed, Superior Shears  
for a Broad Spectrum of Cut-to-Length and  
Scrap Chopping Applications.*



*Hydraulic Shear TSHS 25*



*Pneumatic Shear TSPS 40*

- Pneumatic or Hydraulic
- 38 various capacities
- 2.5" to 40" wide
- Special steel shear blades provide long life between sharpening
- Controlled, adjustable clearance. Cushioned stroke allows higher cycle rates.
- Pneumatic models have direct coupled valves for high speeds, multistage short-stroke cylinders provide constant force.
- Precision, surface hardened tool steel guide posts for high strength and long life.
- Available with acoustic guard and central blade-clearance adjustment.

## Pneumatic Shears

**TSPL** – High speed, light shears for thinner stock, up to 25" wide.

**TSPS** – Medium speed, heavier duty shears for thicker stock, up to 40" wide.

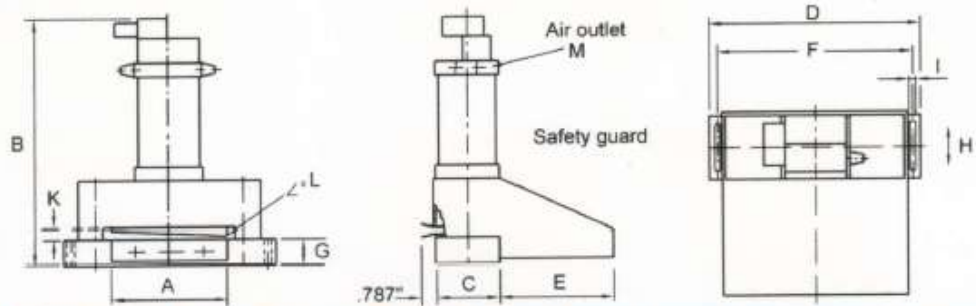
- 2.5° rake angle with 85° wedge angle on shears blades for superior performance and longer life.
- All rating based on 40,000 PSI mild steel.



Pneumatic Shears TSPS, TSPL

	Model	Maximum Width	Maximum Material	SPM* No Load	Stroke Length	Air Cubic Feet	Shears (tons)
TSPL	06 / 03	2.4"	0.020"	250	0.197"	2.6	0.30
	06 / 06	2.4"	0.043"	230	0.197"	4.8	0.70
	06 / 12	2.4"	0.059"	200	0.197"	8.5	1.30
	12 / 06	4.7"	0.039"	180	0.315"	6.1	0.70
	12 / 12	4.7"	0.059"	160	0.315"	10.9	1.30
	16 / 06	6.3"	0.035"	150	0.394"	6.4	0.70
	16 / 12	6.3"	0.059"	130	0.394"	11.1	1.30
	16 / 24	6.3"	0.098"	110	0.394"	18.7	2.70
	25 / 12	10.0"	0.043"	120	0.551"	14.3	1.30
	25 / 24	10.0"	0.087"	100	0.551"	23.8	2.70
	32 / 12	12.6"	0.039"	100	0.787"	17.1	1.30
	32 / 24	12.6"	0.079"	80	0.787"	27.3	2.70
	50 / 12	20.0"	0.020"	80	1.024"	17.7	1.30
	50 / 24	20.0"	0.059"	60	1.024"	26.6	2.70
	65 / 12	25.6"	0.020"	60	1.339"	17.5	1.30
65 / 24	25.6"	0.047"	50	1.339"	29.0	2.70	
TSPS	25 / 36	10.0"	0.118"	90	0.669"	39.1	4.00
	32 / 36	12.6"	0.102"	80	0.827"	34.7	4.00
	32 / 48	12.6"	0.126"	70	0.827"	50.1	5.40
	50 / 45	20.0"	0.098"	65	1.102"	58.1	5.10
	50 / 60	20.0"	0.126"	55	1.102"	65.6	6.70
	65 / 45	25.6"	0.094"	55	1.378"	61.5	5.10
	65 / 60	25.6"	0.118"	45	1.378"	67.1	6.70
	80 / 36	31.5"	0.059"	45	1.614"	47.1	4.00
	80 / 45	31.5"	0.087"	40	1.614"	52.4	6.10
	80 / 60	31.5"	0.118"	35	1.614"	61.1	6.70
	100 / 36	39.5"	0.043"	35	1.969"	44.7	4.00
	100 / 45	39.4"	0.059"	32	1.969"	51.0	6.10
	100 / 60	39.5"	0.110"	25	1.969"	53.1	6.70

\* SPM based on no-load. Specifications subject to technical review and design change.



	Model	A	B	C	D	E	F	G	H	I	K	L	M
TSPL	06 / 03	2.56	9.06	3.54	6.89	0.79*	6.10	1.06	2.36	0.35	0.20	2.5"	R 1/4
	06 / 06	2.56	10.04	3.54	6.89	0.79*	6.10	1.06	2.36	0.35	0.20	2.5"	R 1/4
	06 / 12	2.56	12.40	3.54	6.89	0.79*	6.10	1.06	2.36	0.35	0.20	2.5"	R 1/4
	12 / 06	4.92	10.63	3.54	9.25	0.79*	8.46	1.06	2.36	0.35	0.31	2.5"	R 1/4
	12 / 12	4.92	12.99	3.54	9.25	0.79*	8.46	1.06	2.36	0.35	0.31	2.5"	R 1/4
	16 / 06	6.50	11.81	3.54	11.81	6.30	11.02	1.26	2.36	0.43	0.39	2.5"	R 1/4
	16 / 12	6.50	14.17	3.54	11.81	6.30	11.02	1.26	2.36	0.43	0.39	2.5"	R 1/2
	16 / 24	6.50	18.90	3.54	11.81	6.30	11.02	1.26	2.36	0.43	0.39	2.5"	R 1/2
	25 / 12	10.04	16.54	3.54	15.35	7.09	14.57	1.46	2.36	0.43	0.55	2.5"	R 1/2
	25 / 24	10.04	19.09	3.54	15.35	7.87	14.57	1.46	2.36	0.43	0.55	2.5"	R 1/2
	32 / 12	12.99	22.05	3.74	20.47	7.87	19.29	2.95	2.36	0.51	0.79	2.5"	R 1/2
	32 / 24	12.99	25.20	3.74	20.47	7.87	19.29	2.95	2.36	0.51	0.79	2.5"	R 1/2
	50 / 12	20.08	22.83	3.94	29.13	7.87	27.95	3.94	2.36	0.51	1.02	2.5"	R 1/2
	50 / 24	20.08	30.71	3.94	29.13	7.87	27.95	3.94	2.36	0.51	1.02	2.5"	R 1/2
	65 / 12	25.98	31.10	4.13	35.04	7.87	33.86	4.53	2.36	0.51	1.34	2.5"	R 1/2
65 / 24	25.98	35.43	4.13	35.04	7.87	33.86	4.53	2.36	0.51	1.34	2.5"	R 1/2	
TSPS	25 / 36	10.24	23.62	3.94	20.08	7.87	18.50	2.36	2.76	0.51	0.67	2.5"	R 1/2
	32 / 48	12.99	28.35	4.72	22.44	7.87	21.26	2.36	2.76	0.51	0.83	2.5"	R 1/2
	50 / 45	20.08	28.35	4.72	29.13	7.87	27.56	4.53	2.76	0.51	1.10	2.5"	R 1/2
	50 / 60	20.08	28.35	4.72	29.13	7.87	27.56	4.53	2.76	0.51	1.10	2.5"	R 1/2
	65 / 45	25.98	33.27	6.30	38.58	7.87	37.01	4.53	2.76	0.51	1.38	2.5"	R 1/2
	65 / 60	25.98	35.83	6.30	38.58	7.87	37.01	4.53	2.76	0.51	1.38	2.5"	R 1/2
	80 / 36	31.89	34.25	6.30	44.49	7.87	42.91	4.53	2.76	0.51	1.61	2.5"	R 3/4
	80 / 45	31.89	36.61	6.30	44.49	7.87	42.91	4.53	2.76	0.51	1.61	2.5"	R 3/4
	100 / 36	39.76	35.04	6.30	52.36	7.87	50.79	4.53	2.76	0.51	1.97	2.5"	R 3/4
	100 / 45	39.76	37.80	6.30	52.36	7.87	50.79	4.53	2.76	0.51	1.97	2.5"	R 3/4

\* without safety guard attached

## Hydraulic Shears

**TSHL** – High speed, light shears for heavy sheet metal strips.

**TSHS** – Medium speed, heavy duty shears for heavy sheet metal strips.

- 2.5° rake angle with 85° wedge angle on shears blades for superior performance and longer life.
- All rating based on 40,000 PSI mild steel.

Model	Maximum Width	Maximum Material	SPM** No Load	Stroke Length	Hydraulic Unit HP***	Shear (tons)	No. of Cylinders	
TSHL	16	6.3"	0.189"	50 - 120	0.787"	3 - 7.5	14.00	1
	25	9.8"	0.189"	50 - 120	0.866"	3 - 7.5	14.00	1
	32	12.6"	0.189"	50 - 120	0.984"	3 - 7.5	14.00	1
	40	15.8"	0.181"	50 - 120	1.102"	3 - 7.5	14.00	1
	50	20.0"	0.181"	40 - 100	1.181"	3 - 7.5	14.00	2
	65	25.6"	0.173"	30 - 100	1.575"	3 - 7.5	14.00	2
	80	31.5"	0.165"	30 - 80	1.969"	3 - 10	14.00	2
100	39.5"	0.157"	30 - 60	2.362"	3 - 10	14.00	2	
TSHS	16	6.3"	0.315"	30 - 80	0.945"	5 - 15	28.00	1
	25	9.8"	0.299"	30 - 80	1.024"	5 - 15	28.00	1
	32	12.6"	0.283"	30 - 80	1.142"	5 - 15	28.00	1
	40	15.8"	0.280"	30 - 80	1.260"	5 - 15	28.00	1
	50	20.0"	0.276"	30 - 80	1.378"	7.5 - 20	28.00	2
	65	25.6"	0.268"	25 - 60	1.772"	7.5 - 20	28.00	2
	80	31.5"	0.260"	25 - 50	2.165"	7.5 - 20	28.00	2
	100	39.5"	0.252"	20 - 40	2.480"	7.5 - 20	28.00	2

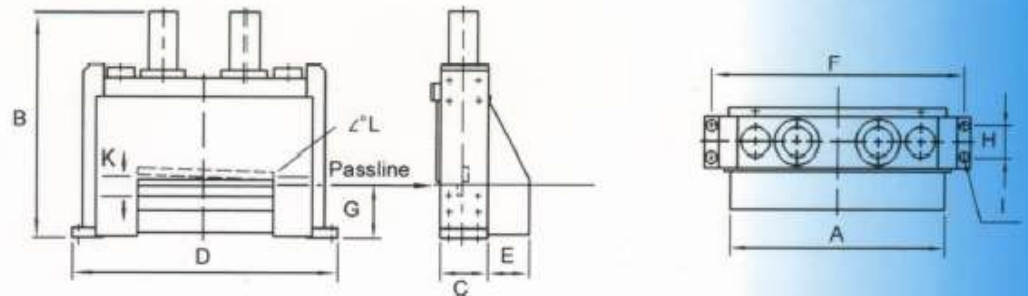
\* Mild steel 40,000 psi.

\*\* Depends on power of hydraulic unit.

\*\*\* Larger HP units available upon request.



Hydraulic Shear TSHS 32



Model	A	B (TSHL)	B (TSHS)	C	D	E	F	G	H	I	K (TSHL)	K (TSHS)	L	
TSHL & TSHS	16	23	38	40	9	33	8	29	11	7	1	0.866	1.024	2.5°
	32	29	39	42	9	39	8	36	11	7	1	1.063	1.220	2.5°
	50	36	40	44	9	46	8	43	11	7	1	1.260	1.457	2.5°
	65	42	40	44	9	52	8	49	11	7	1	1.654	1.850	2.5°
	80	48	44	46	9	58	8	55	11	7	1	2.047	2.244	2.5°
	100	56	44	46	9	66	8	63	11	7	1	2.441	2.559	2.5°



Hydraulic Shear TSHS



Pneumatic Shear TSPS



Pneumatic Shear TSPS



Pneumatic Shear TSPL 65

**We can design and build specialty shears to meet your manufacturing requirements.**



*Special shears in a production line for laminated material*

**GSW offers a wide variety of other products to enhance your press room operations:**

- **Linear Parts and Scrap Transporters**
- **Reels**
- **Cradles**
- **Straighteners**
- **Press Feeders**
- **Space Saving Compact Cradle Straightener Feeders**
- **Full Production Lines**



**GSW**

**Press Automation**

*Accept No Compromise!*

5100 N. Ste Hwy. 7 • North Vernon, IN 47265  
ph: (419) 733-5230 • fax: (812) 392-2989  
order online: [www.gswpress.com](http://www.gswpress.com) • e-mail: [sales@gswpress.com](mailto:sales@gswpress.com)